



JUNE 2026 • VOLUME 32, ISSUE 2

A quarterly newsletter from your friends at KMTelecom

Congratulations to the Class of 2026!

As you celebrate this important milestone, we wish you success in all that lies ahead – whether you're continuing your education, starting a career, or exploring new opportunities. Your hard work has paid off, and your future is full of possibilities. To the parents and families, hats off to you for your guidance, support, and encouragement along the way. This achievement is also yours to celebrate!



Business Office Closed

Friday, July 3rd, 2026
Independence Day

Monday, September 7th, 2026
Labor Day

KMTelecom

18 Second Avenue NW
Kasson, MN 55944-1491
507-634-2511

Office Hours

Monday-Friday 8:00am to 5:00pm

After Hours Troubles
507-634-2505

24/7 Internet Help Desk
507-634-2575

Visit Us Online
www.kmtel.com



Stay Up to Date

Follow KMTelecom on Facebook



and Instagram @kmtelcomfiber

KMTelecom

JOIN US AS WE CELEBRATE

125 Years

OF CONNECTING OUR COMMUNITIES!

We invite you to a special **Customer Appreciation Open House** as we mark this incredible milestone.

THURSDAY
JUNE | 25th | 2026
4:00 PM – 7:00 PM
18 Second Ave NW in Kasson

Mark your calendar!

Stop by to celebrate with us and enjoy a complimentary meal and fun giveaways. You'll also learn more about how we've been serving our community for 125 years.

Thank you for being part of our story.

Tech Support Scams Are Using New Tricks

In an effort to enhance credibility and increase their revenues, tech support scammers are employing different strategies. Here's what to watch out for now:

- **Fake Renewal Notices** – Scammers send fake emails or texts about upcoming subscription renewals for security software (such as Norton, McAfee, or Geek Squad), claiming a high-value charge. Recipients are directed to call a number for a “refund,” which only leads to them becoming scam victims.
- **Browser-Locking Pop-ups** – Fake, loud, and urgent pop-ups appear, claiming a virus has infected the computer and advising the user to call a toll-free number for immediate support. Once the victim calls, the scammer claims to need remote access to the computer, which they use to steal personal data and bank details or install malware.
- **AI and Deepfakes** – New tactics include using AI-generated voices to impersonate officials, making scams more convincing.

Remember that legitimate tech companies will not contact you unexpectedly about an issue with your device. Only scammers do that!



Take a Look @ These Fun Facts About Email

National Email Week is the second week of June. While you've probably been using email for decades, how much about this form of communication do you actually know? Check out these fun facts:

Before its association with email, the @ symbol was primarily used in commercial accounting to mean “at the rate of.” Its transformation into a cornerstone of digital communication began with Ray Tomlinson, the pioneer of email. Tomlinson needed a way to separate the user name from the destination address. He chose the @ symbol for its availability and relative obscurity in computing, and because it provided a clear and intuitive way to denote sending emails “at” a particular server.

Email first reached a wide audience in the 1990s, thanks in part to the You've Got Mail movie with Tom Hanks and Meg Ryan. America Online (AOL) used the iconic words of “You've got mail” to alert users of new messages.

One of the most destructive email-spread viruses in history arrived with the subject line “ILOVEYOU.” This massive 2000 malware, sometimes referred to as the Love Bug or Loveletter, overwrote files and emailed itself to all contacts, infecting 10+ million Windows computers. It contained the attachment “LOVE-LETTER-FOR-YOU.TXT.vbs.”

Queen Elizabeth II was the first head of state to send an email. She sent her inaugural message on March 26, 1976, during a visit to the Royal Signals and Radar Establishment in Malvern, England. She used the ARPANET network, and her username for this demonstration was “HME2” (Her Majesty Elizabeth II), sent to showcase new technology.

Early email etiquette had its peculiarities. For instance, the use of all caps, now considered a digital faux pas akin to shouting, was initially a common practice due to the limitations of early email systems that lacked text formatting options.

The average professional in the U.S. spends about 28% of the work week reading and answering emails. For a full-time worker, that's roughly 2.6 hours per day.

Big Homes May Have Bigger Wi-Fi Challenges

While owning a large home provides many advantages – including having plenty of room for everyone in the family to spread out with their respective devices – it can also result in frustrating Wi-Fi issues. Here are some of the challenges:

- **Building materials** – Heavy walls and flooring can reduce Wi-Fi signal strength, especially if they are brick or concrete or steel studs, instead of lumber.
- **Square footage** – The higher the square footage, the more Wi-Fi signal strength you'll need. In a large home, it's unlikely that a single router or access point will be able to send a signal that can cover multiple users in different rooms on two or three levels.
- **Room furnishings** – Common causes of Wi-Fi interference include fluorescent lights, compact fluorescent light bulbs, metal, mirrors, appliances, and radiant floor heat.
- **Limitations of consumer-grade access points** – Let's say you have three floors in your house with a wireless access point on each floor. The wireless signals emitted from these points are not controller based; they do not "talk to each other" and instead fight over your device. This means when you move between floors, the access points have a difficult time "letting your device go" to the next signal.

If you're a techie with a do-it-yourself attitude, you might enjoy the big job of planning, setting up, and maintaining the Wi-Fi network in your large home. However, if you'd rather be doing something else, consider Managed Wi-Fi from KMTelecom.

For a small monthly fee, we'll handle all the Wi-Fi work for you. One of our technicians will perform a Wireless Network Site Survey on your house to assess the building materials and identify the potential issues for the wireless signal. Then we'll design a plan and install professional-grade equipment to make sure you have the Wi-Fi signal you need throughout your home. Should troubles arise later, we'll be out to take care of them promptly at no additional cost.

For more details on the convenience of Managed Wi-Fi, call 507-634-2511.



Know what's below. Call **811** before you dig

There may be more than roots underground on your property. All sorts of utility lines, pipes, and cables could be buried there. In some cases, they're close to the surface and easily damaged by even shallow digging.

That's why every digging job requires a call to 811 to have utility lines marked. Simply tell the operator where you're planning to dig, and the affected local utilities will send a locator to your property free of charge. Then you'll know what's below and be able to dig safely.

As one of your local service providers, KMTelecom thanks you in advance for your cooperation!



\$25

Win a \$25 Credit on Your KMTelecom Bill

Fill out this form, clip it, and return it with your next bill by June 30th, 2026, for a chance to win a **\$25 credit** to your account. One winner per newsletter will be selected.

Name: _____

Phone #: _____

To qualify for the drawing, please answer the question below. (The answer can be found in this issue.)

What's the date of our Customer Appreciation Open House?

Congratulations to our March 2026 winner, Alicia Lobdell, Mantorville, MN.

Share the Connection. Get Rewarded.

This year, we're proud to celebrate **125 years of serving our communities** – and we know we wouldn't be here without customers like you. As a thank-you for your continued support, we're excited to offer this reward program.

When you refer a friend, neighbor, or family member to KMTelecom and they activate service, **you'll both receive a \$50 bill credit**. Your friend saves \$50, and you earn \$50. It's that simple.

It's Easy to Get Started:

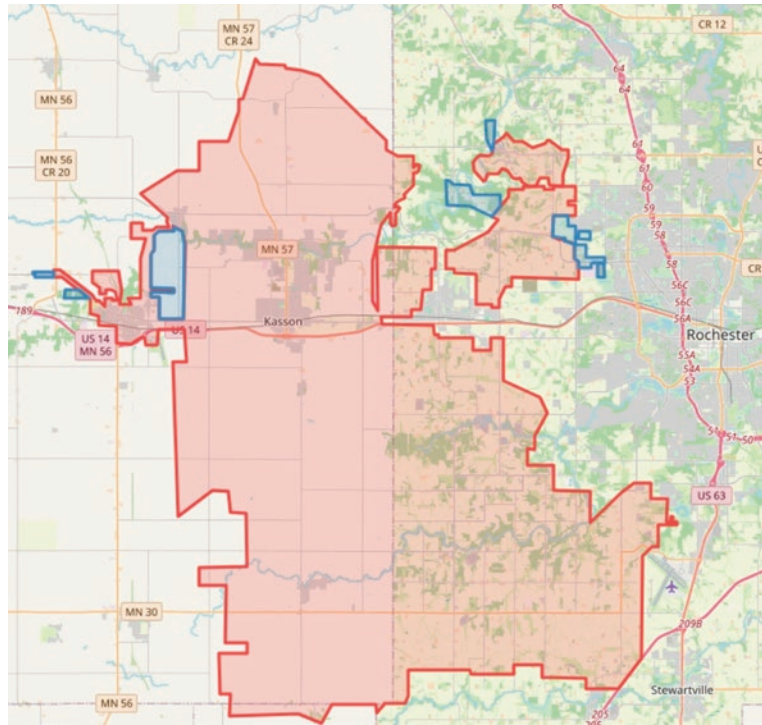
- Refer someone you know.
- When they sign up, they mention you referred them.
- They sign up and activate service.
- You both receive \$50.

Ready to Share?

Have your friends visit www.kmtel.com/refer to learn more and sign up.

For 125 years, KMTelecom has been built on connections – not just through technology, but through the relationships we've formed with customers. Here's to the next 125 years!

**REFER A
FRIEND**



KMTelecom's 2026 Fiber Construction Update

KMTelecom is expanding our fiber network in 2026 with multiple construction projects, including a state-supported Line Extension grant and new residential developments in NW Rochester.

The Line Extension project will bring fiber to 113 locations, with partial funding provided through the State of Minnesota's Broadband Line Extension Connection Program and the remainder funded by KMTelecom. In NW Rochester, we're expanding into residential developments with over 1,000 homes planned over the next several years, with the fiber infrastructure fully funded by KMTelecom as part of our continued effort to grow our network and serve more communities.

The areas highlighted in blue on the map above represent the project areas planned for 2026. Our team is working diligently to move these projects forward, with the goal of having services up and running by the end of 2026.

KMTelecom fiber delivers fast, reliable internet designed to support today's connected homes and businesses. It's also backed by responsive, local customer service, so when you need help, you can reach someone who personally knows your network and your community.

We're proud to continue expanding our network and look forward to connecting even more of our neighbors in 2026. To learn more about KMTelecom fiber, visit kmtelcomfiber.com.